

# GSFGeo

## Specifications

### RECEIVER

- Multi-frequency GNSS receiver
- Signals: GPS(L1/L2/L5),  
Galileo(E1/E5a),  
Beidou(B1C/B1I/B2a),  
SBAS
- Refresh rate: 1 Hz

### ACCURACY

- 60 cm with SBAS
- Startup: <30 seconds

### COMMUNICATIONS

- Bluetooth Low Energy
- Bluetooth v5.0
- Ports: USB Type-C

### PROTOCOL

- Data protocol: NMEA 4.11

### POWER SUPPLY

- 5V DC@ 2A USB-C
- Battery: 3.7V 4000mAh Li-ion
- Recharge time: approximately 6 hours
- Battery life: approximately 36 hours

### ANTENNA

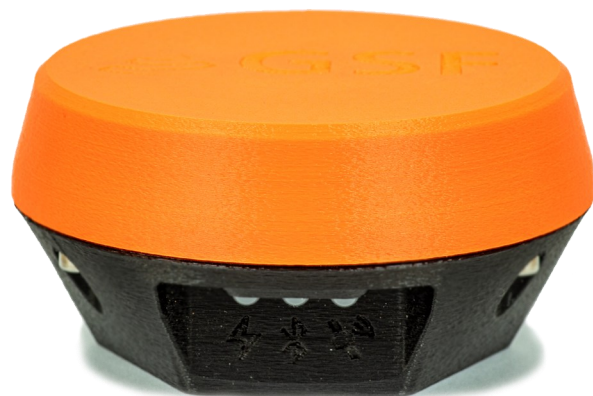
- Dual patch antenna
- Frequency range  
1164MHz~1255 Mhz  
1563MHz~1606 Mhz

### ROBUSTNESS

- GPS operating temperature:  
-40°C to +85°C
- GPS storage temperature:  
-40°C to +85°C
- Dimensions with antenna  
100 x 100 x 53 mm
- Weight: 300 g




### INCLUDED

- Universal adaptive USB charger
- USB Type-C cable
- Mount with 5/8 x 11 Tip
- User guide



# Geode vs GSFGPS vs GSFGGeo



	<b>Geode</b>	<b>GSFGPS RV5</b>	<b>GSFGGeo</b>
Manufacturer			
Dimensions	111 x 111 x 43 mm	58 x 144 x 39 mm	100 x 100 x 53 mm
Water resistance	IPX7	Yes	Yes
Accuracy	+/- 30 cm	1 meter	+/- 60 cm
Communication	Bluetooth 4.0	Bluetooth LE 5.0	Bluetooth LE 5.0
Battery life	Around 10h	Around 55h	Around 36h
Recharge time	4h	6h	6h
Weight	360g	180g	300g
Work with	Android & iPhone	Android	Android